



THE COASTAL REGION

METROPOLITAN PLANNING ORGANIZATION

110 EAST STATE STREET, SAVANNAH, GA 31401

**Resolution to Amend the Non-Motorized Transportation Plan of
the Coastal Region Metropolitan Planning Organization (CORE MPO)**

WHEREAS, the Coastal Region Metropolitan Planning Organization (CORE MPO) has been designated by the Governor of Georgia as the Metropolitan Planning Organization of the Savannah urbanized area in accordance with federal requirements of Title 23, Section 134 of the United States Code to have a cooperative, comprehensive, and continuing transportation planning process; and

WHEREAS, CORE MPO adopted the Non-Motorized Transportation Plan (NMTP) in 2014 and adopted an updated version in 2020; and

WHEREAS, CORE MPO desires to adopt amendments to the Non-Motorized Transportation Plan for the CORE MPO Metropolitan Planning Area to reflect the updated information and the latest developments; and

WHEREAS, the proposed NMTP amendments include the addition of new projects and updates to several projects within the CORE MPO Metropolitan Planning Area boundary as outlined in the NMTP amendment staff report;

WHEREAS, CORE MPO has completed the public review and comment period for the proposed NMTP amendments according to the Participation Plan and addressed all comments received; and

WHEREAS, CORE MPO has conducted a public hearing for the proposed amendments, and has taken into consideration comments made at the public hearing; and

WHEREAS, all requirements of the Participation Plan pertaining to NMTP amendments and administrative modifications have been met.

NOW, THEREFORE, BE IT RESOLVED THAT, the Coastal Region Metropolitan Planning Organization approves the proposed amendments to the Non-Motorized Transportation Plan as shown in the summary of NMTP amendment staff report with any corrections based upon the motion of August 27, 2025.

CERTIFICATION

I hereby certify that the above is a true and correct copy of a resolution adopted by the Coastal Region Metropolitan Planning Organization Board at a meeting held on **August 27, 2025**.

Chester A. Ellis, Chairman
Coastal Region Metropolitan Planning Organization



Amendments to the Non-Motorized Transportation Plan August 2025

The Non-Motorized Transportation Plan (NMTP) is the CORE MPO's Bicycle and Pedestrian plan for the region. The plan includes proposed bicycle and pedestrian infrastructure developments. In preparation for the 2025 Call for Projects, in which several funding sources will be available, including the Transportation Alternatives (Y301) funding, Surface Transportation Block Group (Y230) funding and Carbon Reduction Program (Y601) funding, CORE MPO is processing amendments to the NMTP to ensure the potential projects are eligible for funding. Bicycle and Pedestrian projects are ineligible for the funding during the Call for Projects process if they are not in the Non-Motorized Transportation Plan.

In August 2025, Chatham County requested amendments for several projects in the Non-Motorized Transportation Plan. Additionally, Port Wentworth requested amendments to the Non-Motorized Transportation Plan. Additional updates were made to the amendment request based on input from the Bicycle and Pedestrian Advisory Committee (BPAC).

- BPAC requested the addition of local plans and the unadopted projects identified for the draft update to the Non-Motorized Transportation Plan, including
 - Tide to Town and the segments that compose it
 - East Coast Greenway within the MPO planning area
 - Georgia Hi-Lo within the MPO planning area
 - Effingham County's Active Transportation Plan
 - Individual segments identified in the draft update to the NMTP

The input has been incorporated into the revised NMTP amendment report. The changes to the Non-Motorized Transportation Plan are detailed in the following pages.

AMENDMENT PROCESS FOR NMTP

The Non-Motorized Transportation Plan does not have a defined amendment process within the plan or the CORE MPO's Participation Plan. Therefore, the MPO staff structured this amendment process similar to the MPO's Transportation Improvement Program amendment process.

PUBLIC PARTICIPATION PROCESS

The CORE MPO Participation Plan does not outline a specific public participation process for the Non-Motorized Transportation Plan amendments. However, to give the public a chance to comment on the proposed changes, CORE MPO will conduct a 15-day public comment and review period. To process the proposed amendments in August 2025, CORE MPO advertised a fifteen (15) day public comment period in the Savannah Morning News on Sunday, August 10, 2025 (Appendix B). The notice was sent to the local news media and the consultation agencies as well as neighborhood associations and posted on the CORE MPO website. The comment period started on August 13, 2025 and closed on August 27, 2025. A public hearing was advertised and held in conjunction with the CORE MPO Board meeting on August 27, 2025. No written comments on the proposed NMTP amendments have been received from the public. Input regarding specific projects and the addition of new amendments has been incorporated as summarized on Page 1 of this report. Other verbal comments from the CORE MPO Board and advisory committees have been addressed on the floor at the August 2025 meetings.

CORE MPO ACTION FOR AUGUST 2025

The CORE MPO Technical Coordinating Committee (TCC) endorsed the proposed TIP updates on August 21, 2025. The CORE MPO Board adopted the TIP updates on August 27, 2025.

PROPOSED AMENDEMENTS TO THE NMTP

PI#	Description	Amendment
N/A	Ferguson Avenue, from Shipyard Avenue to Skidaway Road	Amend project segment limits
N/A	LaRoche Avenue, from Bluff Drive to Skidaway Road	Amend project segment limits
N/A	Armada/le/Cantyre/Barnly	Amend project into plan
N/A	Armada/le at Mobley Park to Crossgate	Amend project into plan
N/A	Crossgate/Boat Launch	Amend project into plan
N/A	Crossgate / SR- 21 to electrical transmission line to Monteith Road	Amend project into plan
N/A	SR-21 to Meinhard	Amend project into plan
N/A	Meinhard/Monteith to SR-30	Amend project into plan
N/A	Meinhard/Monteith to SR-30 (Through Anchor Park)	Amend project into plan
N/A	Port Wentworth city limits at Benton Boulevard to SR-30	Amend project into plan
N/A	Anchor Park to SR-30 through residential north to Saussy	Amend project into plan
N/A	Old Richmond Road at SR-30 to the roundabout at Lakeside Blvd and Mulberry Ave	Amend project into plan
N/A	Lakeside Drive loop to Mulberry Ave	Amend project into plan
N/A	Mulberry to Rice Hope Plantation Rd to SR-21	Amend project into plan
N/A	Newly identified projects within the ongoing Non-Motorized Transportation Plan update	This includes amending Tide to Town, East Coast Greenway, Georgia Hi Lo, Effingham County's Active Transportation Plan, individual segments within the draft plan update.

Ferguson Avenue	
PI#	N/A
MTP Priority:	NMTP projects are consistent with the 2050 MTP Non-Motorized Improvements Set Aside.
Project Description:	This project is a bikeway project within the Non-Motorized Transportation Plan.
Project Status:	The bikeway was originally planned on Ferguson Avenue to extend from Whitefield Avenue to Skidaway Road. In August 2025, Chatham County requested an amendment to update the alignment of the bikeway. The updated bikeway will extend from Shipyard Road to Skidaway Road.
Amendment:	Amend project segment limits
PBPP:	This project will help achieve the performance targets for Safety and Air Quality.
Requesting Agency:	Chatham County

LaRoche Avenue	
PI#	N/A
MTP Priority:	NMTP projects are consistent with the 2050 MTP Non-Motorized Improvements Set Aside.
Project Description:	This project is a bikeway project within the Non-Motorized Transportation Plan.
Project Status:	The bikeway was originally planned on LaRoche avenue from Grimball Point Road to Nottingham Drive. In August 2025, Chatham County requested an amendment to update the alignment of the bikeway. The updated bikeway will extend from Bluff Drive to Skidaway Road.
Amendment:	Amend project segment limits
PBPP:	This project will help achieve the performance targets for Safety and Air Quality.
Requesting Agency:	Chatham County

Armada/Canty/Barnly	
PI#	N/A
MTP Priority:	NMTP projects are consistent with the 2050 MTP Non-Motorized Improvements Set Aside.
Project Description:	This trail connects to the Mobley Park, the future downtown development at Cantyre, and future S Coastal Highway sidewalk Improvements.
Project Status:	In August 2025, Port Wentworth requested to add this project to the NMTP. This project was developed as part of the Anchor Trail Conceptual Plan.
Amendment:	Amend project into plan
PBPP:	This project will help achieve the performance targets for Safety and Air Quality.
Requesting Agency:	Port Wentworth

Armada at Mobley Park to Crossgate

PI#	N/A
MTP Priority:	NMTP projects are consistent with the 2050 MTP Non-Motorized Improvements Set Aside.
Project Description:	This trail (already informally in use) aligns with the drainage ditch between Phillips Avenue and Osteen Street
Project Status:	In August 2025, Port Wentworth requested to add this project to the NMTP. This project was developed as part of the Anchor Trail Conceptual Plan.
Amendment:	Amend project into plan
PBPP:	This project will help achieve the performance targets for Safety and Air Quality.
Requesting Agency:	Port Wentworth

Crossgate/Boat Launch

PI#	N/A
MTP Priority:	NMTP projects are consistent with the 2050 MTP Non-Motorized Improvements Set Aside.
Project Description:	This trail along S Coastal Highway connect downtown to the boat launch.
Project Status:	In August 2025, Port Wentworth requested to add this project to the NMTP. This project was developed as part of the Anchor Trail Conceptual Plan.
Amendment:	Amend project into plan
PBPP:	This project will help achieve the performance targets for Safety and Air Quality.
Requesting Agency:	Port Wentworth

Crossgate / SR- 21 to electrical transmission line to Monteith Road

PI#	N/A
MTP Priority:	NMTP projects are consistent with the 2050 MTP Non-Motorized Improvements Set Aside.
Project Description:	<p>This trail segment connects downtown to uptown PW approximately adjacent to the rail line that runs from Gulfstream Road at SR-21 in City of Savannah, crossing into Port Wentworth at the Jimmy DeLoach Pkwy Overpass and ending at the transmission line at Monteith.</p> <p>More study is required to explore the viability of this option</p>
Project Status:	In August 2025, Port Wentworth requested to add this project to the NMTP. This project was developed as part of the Anchor Trail Conceptual Plan.
Amendment:	Amend project into plan
PBPP:	This project will help achieve the performance targets for Safety and Air Quality.
Requesting Agency:	Port Wentworth

SR-21 to Meinhard	
PI#	N/A
MTP Priority:	NMTP projects are consistent with the 2050 MTP Non-Motorized Improvements Set Aside.
Project Description:	This trail segment within the existing Monteith right-of-way connects SR-21 to approximately Anchor Park along Meinhard
Project Status:	In August 2025, Port Wentworth requested to add this project to the NMTP. This project was developed as part of the Anchor Trail Conceptual Plan.
Amendment:	Amend project into plan
PBPP:	This project will help achieve the performance targets for Safety and Air Quality.
Requesting Agency:	Port Wentworth

Meinhard/Monteith to SR-30	
PI#	N/A
MTP Priority:	NMTP projects are consistent with the 2050 MTP Non-Motorized Improvements Set Aside.
Project Description:	This trail segment is within the existing Meinhard right-of-way is the continuation of the Monteith segment that connects downtown PW to the future Anchor Park and multiple existing and future residential developments.
Project Status:	In August 2025, Port Wentworth requested to add this project to the NMTP. This project was developed as part of the Anchor Trail Conceptual Plan.
Amendment:	Amend project into plan
PBPP:	This project will help achieve the performance targets for Safety and Air Quality.
Requesting Agency:	Port Wentworth

City limits at Benton Boulevard to SR-30

PI#	N/A
MTP Priority:	NMTP projects are consistent with the 2050 MTP Non-Motorized Improvements Set Aside.
Project Description:	This trail segment is the expansion of the approximate 8' existing sidewalk on the west side of Benton Boulevard. Future Effingham Parkway to continue the improvements.
Project Status:	In August 2025, Port Wentworth requested to add this project to the NMTP. This project was developed as part of the Anchor Trail Conceptual Plan.
Amendment:	Amend project into plan
PBPP:	This project will help achieve the performance targets for Safety and Air Quality.
Requesting Agency:	Port Wentworth

Meinhard/Monteith to SR-30 (Through Anchor Park)	
PI#	N/A
MTP Priority:	NMTP projects are consistent with the 2050 MTP Non-Motorized Improvements Set Aside.
Project Description:	<p>This trail segment parallels the park road and extends through Anchor Park from the south to the north entrance at SR-30.</p> <p><i>Alternative or parallel connections could be explored through the transmission line corridor. More study is required to explore the viability of this option.</i></p>
Project Status:	In August 2025, Port Wentworth requested to add this project to the NMTP. This project was developed as part of the Anchor Trail Conceptual Plan.
Amendment:	Amend project into plan
PBPP:	This project will help achieve the performance targets for Safety and Air Quality.
Requesting Agency:	Port Wentworth

Anchor Park to SR-30 through residential north to Saussy

PI#	N/A
MTP Priority:	NMTP projects are consistent with the 2050 MTP Non-Motorized Improvements Set Aside.
Project Description:	<p>This trail segment extends from Anchor Park east to the Newport Boulevard / Scott Road residential developments and across SR-30 to the future residential on the north side of SR-30, ending into a connection and trailhead element at Saussy Road</p> <p><i>Alternative or parallel connections could be explored through the transmission line corridor. More study is required to explore the viability of this option</i></p>
Project Status:	In August 2025, Port Wentworth requested to add this project to the NMTP. This project was developed as part of the Anchor Trail Conceptual Plan.
Amendment:	Amend project into plan
PBPP:	This project will help achieve the performance targets for Safety and Air Quality.
Requesting Agency:	Port Wentworth

Old Richmond Road at SR-30 to the roundabout at Lakeside Blvd and Mulberry Ave

PI#	N/A
MTP Priority:	NMTP projects are consistent with the 2050 MTP Non-Motorized Improvements Set Aside.
Project Description:	This trail segment begins within the existing Old Richmond right- of- way and then, oh on an off- road segment, passes through City property and connects through the drainage to the roundabout at Lakeside Blvd and Mulberry Ave
Project Status:	In August 2025, Port Wentworth requested to add this project to the NMTP. This project was developed as part of the Anchor Trail Conceptual Plan.
Amendment:	Amend project into plan
PBPP:	This project will help achieve the performance targets for Safety and Air Quality.
Requesting Agency:	Port Wentworth

Lakeside Drive loop to Mulberry Ave	
PI#	N/A
MTP Priority:	NMTP projects are consistent with the 2050 MTP Non-Motorized Improvements Set Aside.
Project Description:	<p>This project is a bikeway project within the Non-Motorized Transportation Plan. This trail segment is the expansion of the existing sidewalks Lakeside Blvd, Market Blvd, Mulberry Ave, and the Lakeside Drive loop.</p> <p><i>Additional alternatives or parallel connections could be explored through signed segments on Rice Hope street less than 25 mph.</i></p>
Project Status:	In August 2025, Port Wentworth requested to add this project to the NMTP. This project was developed as part of the Anchor Trail Conceptual Plan.
Amendment:	Amend project into plan
PBPP:	This project will help achieve the performance targets for Safety and Air Quality.
Requesting Agency:	Port Wentworth

Mulberry to Rice Hope Plantation Rd to SR-21	
PI#	N/A
MTP Priority:	NMTP projects are consistent with the 2050 MTP Non-Motorized Improvements Set Aside.
Project Description:	<p>This trail segment Lakeside Blvd via the transmission line that runs through Rice Hope, and then connecting to Rice Hope Plantation Road where the trail will end connect to SR-21.</p> <p><i>More study is required to explore the viability of this option</i></p>
Project Status:	In August 2025, Port Wentworth requested to add this project to the NMTP. This project was developed as part of the Anchor Trail Conceptual Plan.
Amendment:	Amend project into plan
PBPP:	This project will help achieve the performance targets for Safety and Air Quality.
Requesting Agency:	Port Wentworth

Newly identified projects within the unadopted Non-Motorized Transportation Plan update

PI#	N/A
MTP Priority:	NMTP projects are consistent with the 2050 MTP Non-Motorized Improvements Set Aside.
Project Description:	The Non-Motorized Transportation Plan is the CORE MPO's bicycle and pedestrian plan for the region. The NMTP is currently being updated with the inclusion of new projects and data. Part of the plan includes a list of projects for the region. To be eligible for federal funds through the MPO, projects must be consistent with the NMTP.
Project Status:	In August 2025, BPAC voted to adopt the projects part of the current and ongoing NMTP update into the most recently adopted version of the NMTP. This includes amending Tide to Town, East Coast Greenway, Georgia Hi Lo, Effingham County's Master Bike Plan, individual segments within the plan
Amendment:	Amend projects into plan
PBPP:	This project will help achieve the performance targets for Safety and Air Quality.
Requesting Agency:	BPAC

The following pages show the projects identified for the ongoing Non-Motorized Transportation Plan update that are proposed to be amended into the most recently adopted version of the NMTP, which was adopted in 2020.

Major Plan Segments

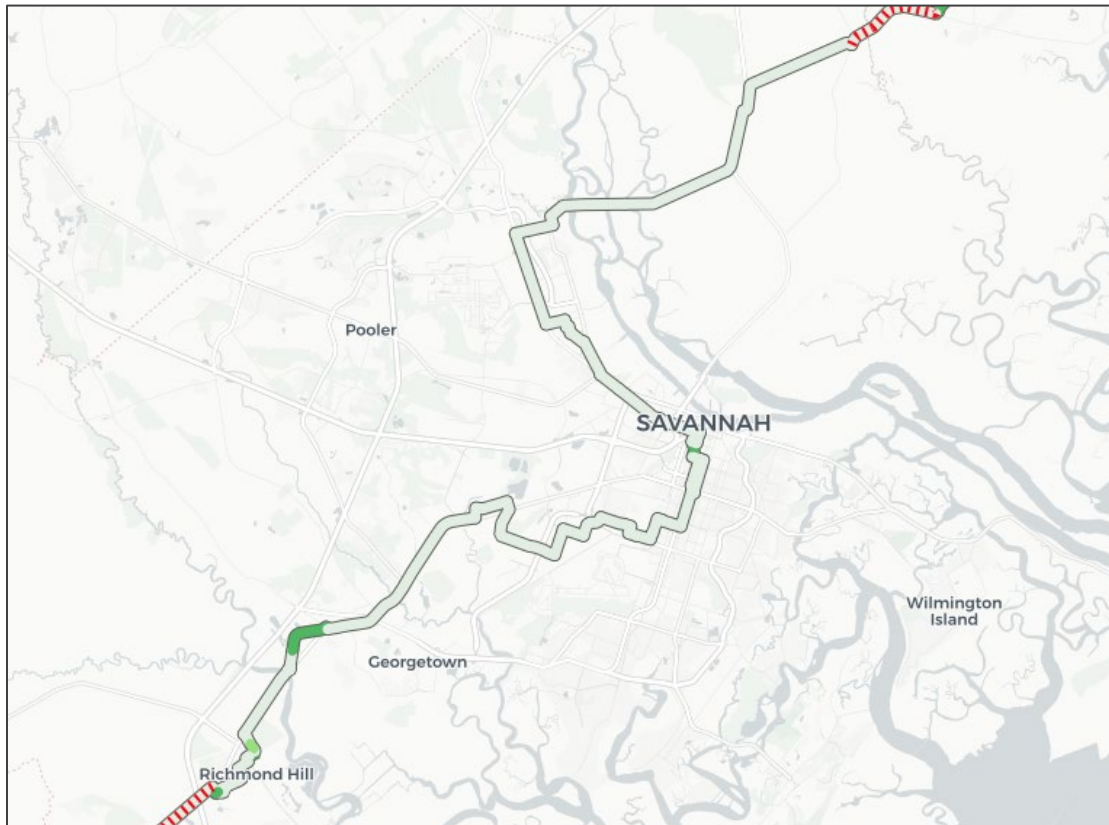
Tide to Town

Amend all of Tide to Town, including its' segments, into NMTP, as identified in the Tide to Town Plan.

Middleground Road - Multi-use path from SR 204/Abercorn Street (northern intersection) to SR 204/Abercorn Street (southern intersection at Georgia Southern University)
Montgomery Cross Road – Multi-use path and access management improvements – SR 204/Abercorn Street to Sallie Mood Drive
East Side Trail <ul style="list-style-type: none"> • City Center to East Side Trail • Bike lane connection to East Side Trail
West Side Trail <ul style="list-style-type: none"> • Phase 1 • Phase 2
South Side Trail <ul style="list-style-type: none"> • Phase 1
East Side Trail and DeRenne Avenue Connections <ul style="list-style-type: none"> • Randolph Street sidewalk expansion into multi-use trail between Wheaton Street and Presidents Street • DeRenne Avenue bike lanes north and south of DeRenne
Casey Canal Path and Montgomery Cross Rd. Complete Street
Southside Trail and Local Schools Connection <ul style="list-style-type: none"> • Tibet Avenue bike lanes • Largo Drive bike lanes
Wilshire Canal Path
South Side Trail connection to Habersham <ul style="list-style-type: none"> • Vernon River Path – Multiuse path along Vernon River between Edgewater Rd and Montgomery Cross Rd • Montgomery to Mohawk Lake – Multiuse path along Montgomery Cross Rd to Tibet Ave • White Bluff Improvements – Compete street path from Wilshire Canal to Abercorn St
Complete East Side Trail: Police Memorial Trail to Savannah Riverfront <ul style="list-style-type: none"> • Victory Drive North • Anderson to Wheaton • Wheaton to Normandy • Normandy to Eastern Wharf

East Coast Greenway

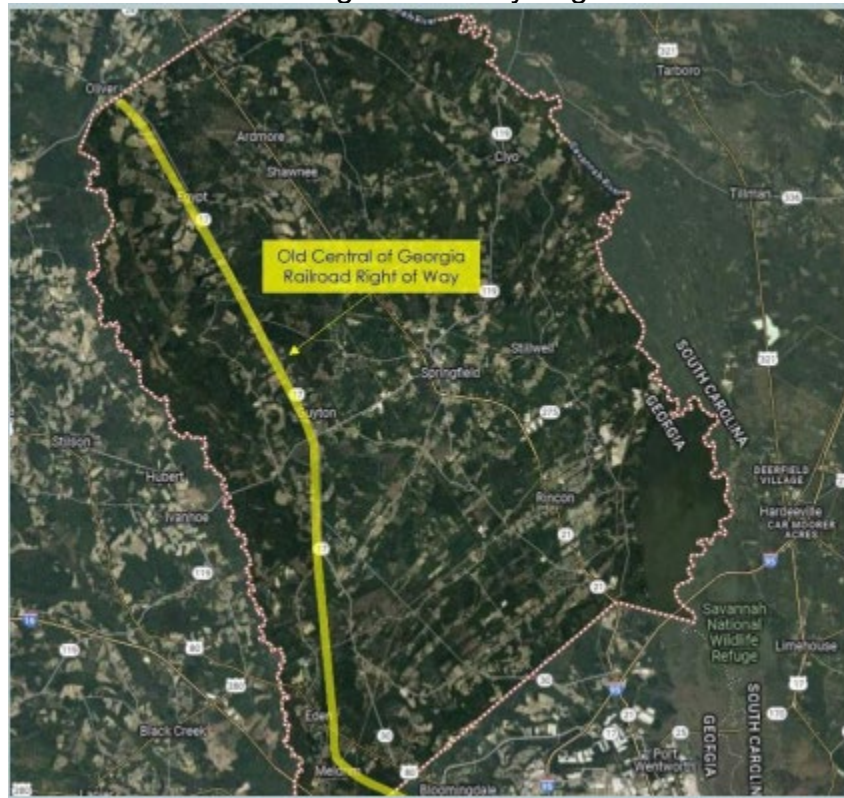
Amend East Coast Greenway segments within the CORE MPO planning area into NMTP. According to the East Coast Greenway project team “the route through Georgia links inland communities across Georgia’s six coastal counties. The network connects towns, attractions, recreational sites, historic and cultural sites, waterways, and natural habitats of the coast.”



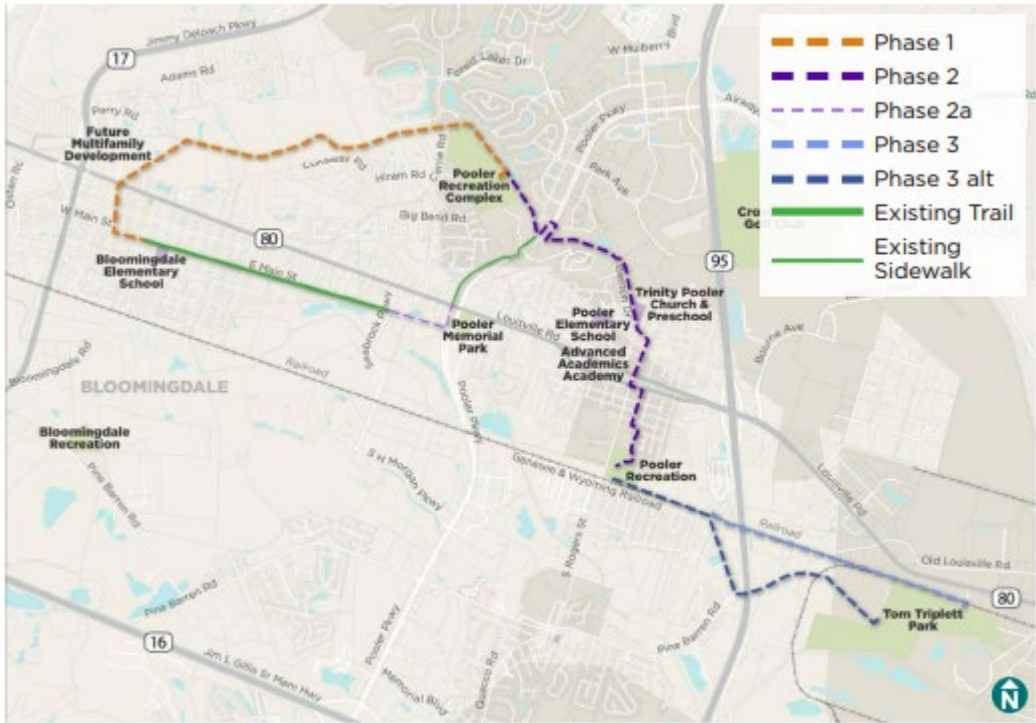
Georgia Hi-Lo

Amend Georgia Hi-Lo trail segments within the CORE MPO planning area into NMTP. This information was sourced from the Georgia Hi Lo Report. According to the Georgia Hi Lo Report “the Georgia Hi-Lo Trail is a vision to connect Athens to Tybee Island via a paved multi-use trail that, when complete, will be the longest paved trail in America. The Hi-Lo Trail will cross eight counties in east-central Georgia and empower small town economies by supporting local businesses through tourism and attracting new residents. It will improve community health by providing opportunities to safely walk and bike on inviting trails. As a facility open for all, the Georgia Hi-Lo Trail will enable people with disabilities, senior citizens, and families with children to enjoy Georgia’s great outdoors.”

Hi-Lo Effingham County Alignment



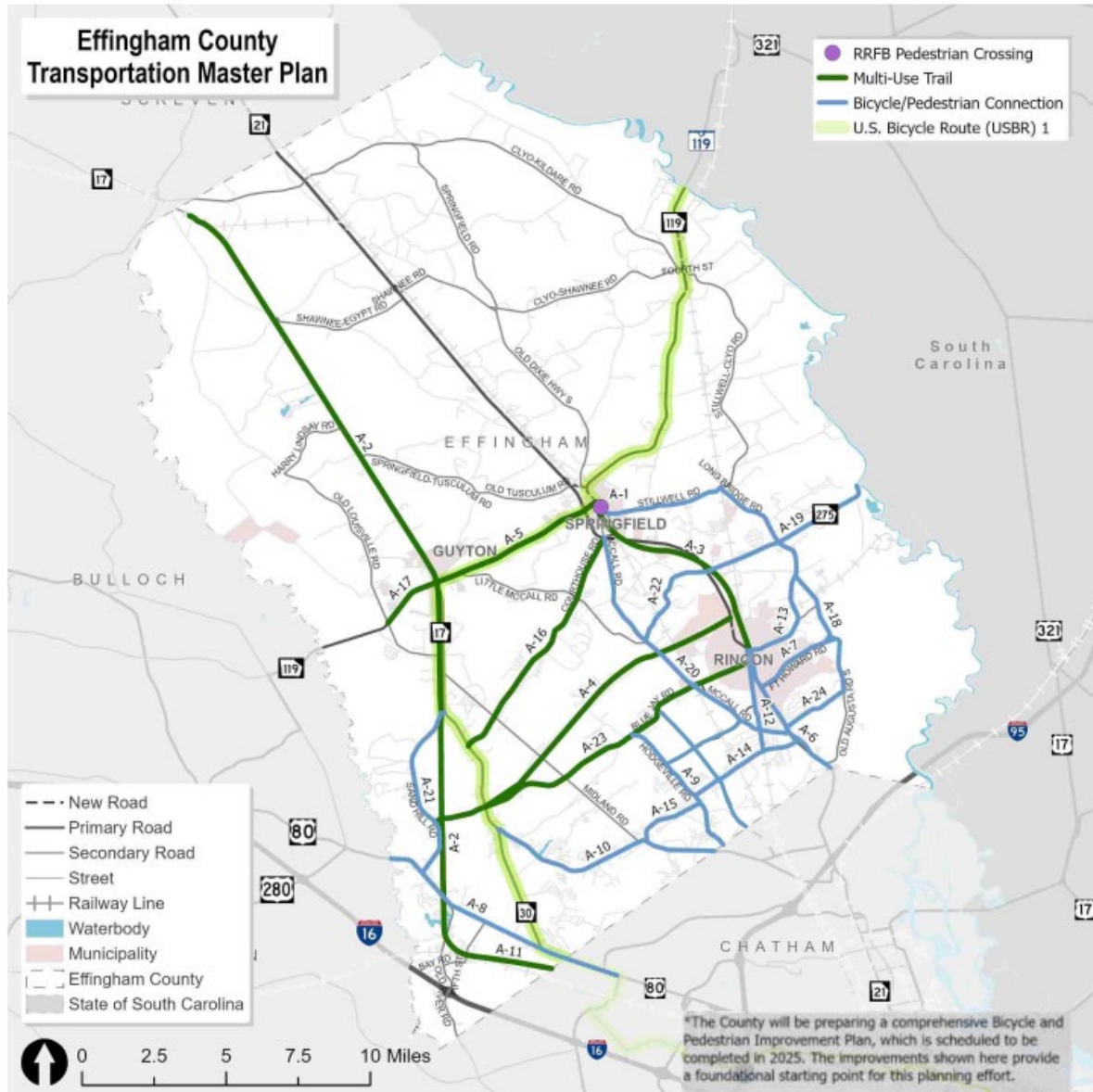
Hi-Lo Chatham County Alignment



Chatham County Hi-Lo model project map.

Effingham County's Active Effingham Plan

Amend segments identified in Effingham County's Active Effingham Plan within the CORE MPO planning area into NMTP.



Existing and Proposed Projects

Project ID	Road/Project Path	Extents (w/ County)	Project Type
USBR 1/Coastal	US Bike Route 1	South Carolina border to US Hwy 80 via Hwy 119 and Hwy 17	Route demarcated by signage
Local bike route	Local Bike route	Reedsville Road to south Carolina Boundary via Ebenezer, Long Bridge, and Stillwell Clyo Rd	Route demarcated by signage
Tran Georgia	Trans Georgia	Bryan County Boundary to Chatham County Boundary vis US Hwy 80	Route demarcated by signage
Guyton Main Street Rail Trail	Guyton Main Street Rail Trail	Simmons Street to Third Ave via Central Blvd	Route demarcated by signage
Savannah River Run	Savannah River Run	Screven County Line to USBR 1 via Highway 21	Route demarcated by signage
A-2	Hi-Lo Trail	Screven County Line to Chatham County Line	Multi-Use trail
A-3	Rincon-Springfield Bicycle/Pedestrian Connection	SR-119 to 4 th St/Rincon Stillwell Rd	Bike lanes, sidewalks
A-4	Low Ground Rd Bike/Ped Connection	Blue Jay Rd to McCall Rd	Multi-Use Trail
A-5	SR 119 Multi-Use Path	SR 17 to N Laurel St	Multi-Use Trail
A-6	Sr 21	4 th St/Rincon-Stillwell Rd to Chatham County Line	Bike lanes, sidewalks
A-7	Fort Howard Rd	SR 21 to Old August Rd	Bike Lanes
A-8	US 80	Bulloch county Line to Chatham County Line	Separated Bike Lanes, sidewalks
A-9	Hodgeville Rd	Blue Jay Rd to Chatham County Line	Wide Shoulder, Sidewalks
A-10	SR 30/Noel C Conaway Rd	SR 17 to Chatham County Line	Bicycle Lanes, sidewalks

A-11	Meldrim-Chatham Trail	Central Ave to Chatham County Line	Multi-use trail
A-12	N. Carolina Ave	SR-21 to Goshen Rd	Wide shoulder, sidewalks
A-13	4 th st/Rincon-Stillwell Rd	SR-21 to Old Augusta Rd	Bicycle Lanes, sidewalks
A-14	Goshen Rd	Hodgeville rd to SR 21	Bicycle Lanes, sidewalks
A-15	Kolic Helmet Rd	SR 30/Noel C Conaway Rd to Hodgeville Rd	Bicycle Lanes. Sidewalks
A-16	Courthouse Rd	SR 17 to SR 21	Multi-Use Trail
A-17	SR 119 Multi Use path extension	Old Louisville Rd to SR 17	Multi-Use Trail
A-18	Old Augusta Rd	SR 275 to SR 21	Wide Shoulder
A-19	SR 275	SR 21 to SC line	Sike lanes, sidewalks
A-20	McCall Rd	SR 21 to McCall Rd	Wide shoulders, sidewalks
A-21	Sand Hill Rd	SR 21 to McCall Rd	Bicycle lanes, sidewalks
A-22	Rahn Station Rd	SR 21 to McCall Rd	Wide Shoulder
A-23	Blue Jay Rd	Sand Hill Rd to SR 21	Multi use trail
A-24	Chimney Rd	SR 21 to Old Augusta Rd	Bike lanes, sidewalks
A	Clyo-Egypt Connection	Hwy 17 N to Hwy 119 N via Shawnee-Egypt Rd and Old Dixie Hwy s	Bike Lane
B	Berryville Connection	Hwy 119 N to Stillwell-Clyo Rd via Berryville Rd	Bike Lane
C	Low Ground Rd Connection	Blue jay Rd to McCall Rd via Low Ground Rd	Multi use trail
D	Springfield-Stillwell Connection	South Laurel Street to Long Bridge rd via Stillwell Rd	Multi use trail
E	Gateway Parkway Connection	Hodgeville Rd to McCall Rd via Gateway Pkwy	Multi use trail
F	Clyo-Kildare Rd Connection	Clyo-Kildare Rd	Bike lane
G	Springfield Rd Connection	Springfield Rd	Bike lane

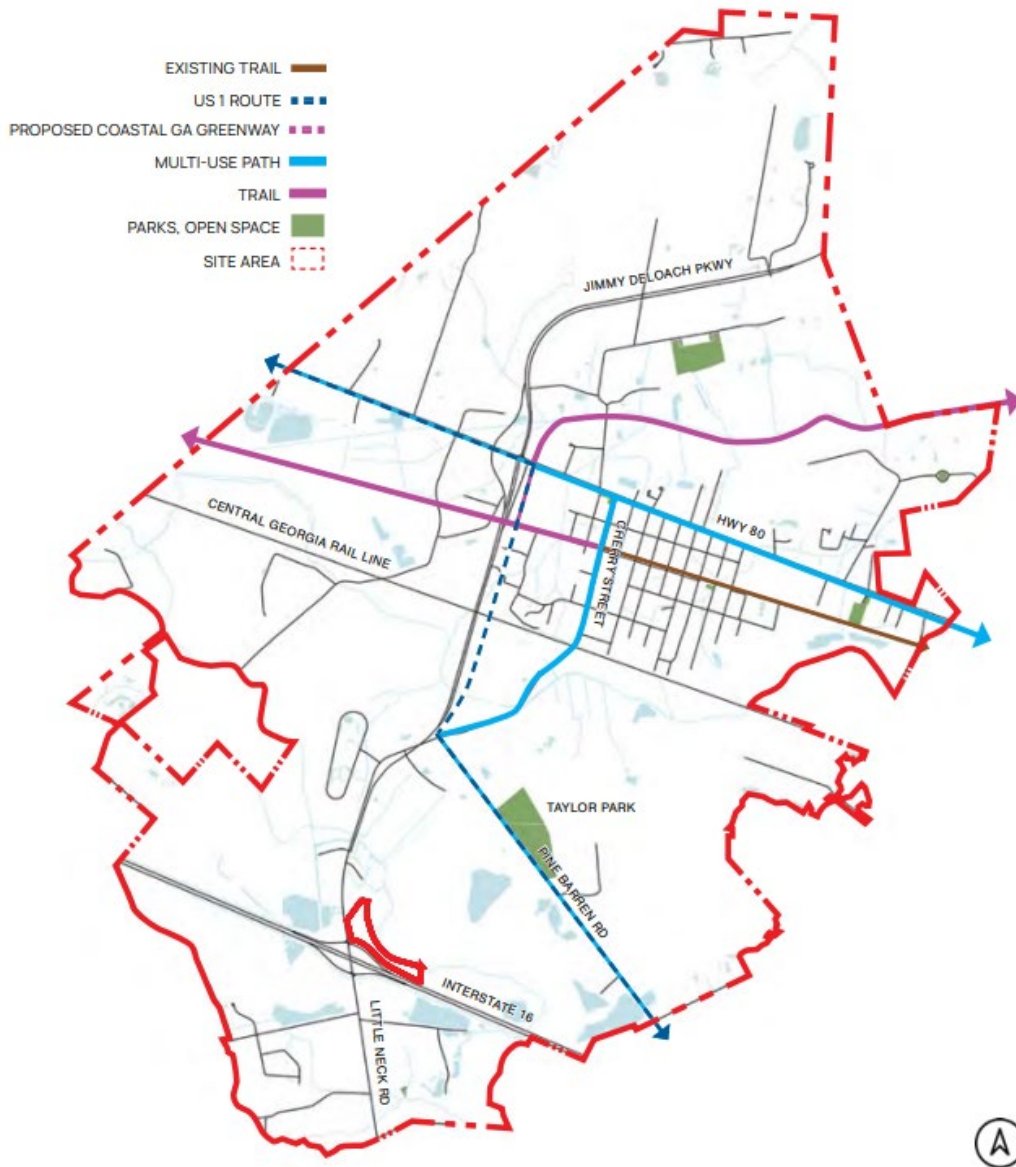
H	Blue Jay to Goshen Rd Connection	Blue Jay to Goshen Rd	Bike lane
---	-------------------------------------	--------------------------	-----------

Port Wentworth Projects within Anchor Trail Conceptual Plan

Projects have been listed above (pg. 3 and pgs. 6-17).

Individual Segments

Bloomington, GA (as identified in Bloomington Growth Plan)



Projects in the Bloomingdale Growth Plan include:

Multi-Use Path on Highway 80
Trail on Cherry Street, extending Northwest
Multi-Use Path on Highway 87, alongside Jimmy Deloach Pkwy and down Pine Barren Rd

City of Savannah (as identified in Savannah's Vision Zero Plan)

Street/Intersection	Project Description
Crosswalk improvements for Middleground Road, including installing audible crosswalks	Crosswalk
37th Street from Ogeechee Rd to Bee Rd	Corridor upgrades including: Traffic signal infrastructure and timing improvements, new/upgraded ADA and pedestrian facilities, possible through lane removal.
Tide-to-Town @ Middleground Rd from Abercorn St to Montgomery Cross Rd	Construction of a separated multi-use path as Phase I of the Tide to Town pedestrian and bicycle infrastructure.
Montgomery St from Taylor St to DeRenne Ave	Reallocation of existing road space to add protected bicycle lanes from DeRenne Ave. to Victory Dr., standard bicycle lanes from Victory Dr. to West Taylor St., and create on-street parking where appropriate.
Montgomery Cross Roads from Middleground Rd to East City Limits	Identify opportunities for enhanced mid-block pedestrian crossings, install in-fill medians between Liberty Street and Gwinnett Street, reduce the number of travel lanes where appropriate, and create onstreet parking.
Waters Ave from DeRenne Ave to Montgomery Cross Roads	Installation of pedestrian facilities from DeRenne Avenue to Stephenson Avenue; infill sidewalk to have connectivity on both sides of Waters Avenue south of Stephenson. Reallocation of existing road space to add protected bicycle lanes and a center median from Stephenson Avenue to Montgomery Cross Road.
Liberty Pkwy from Ogeechee Rd to Stanley Ave	Installation of permanent RADAR driver feedback signage on both sides as well as pedestrian facilities where feasible on the west side of Liberty Parkway from Ogeechee Road to Staley Avenue.

Thunderbolt (as identified by Town of Thunderbolt staff)

Street/Intersection	Project Description
Placentia Canal from Victory Drive to Bonaventure Road	Shared Use Path
Falligant Ave. From College Street to Driveway at Tara	Sidewalk
Victory Dr from Whatley Ave to Mechanics Ave	Sidewalk
Victory Dr from Whatley Ave to Mechanics Ave	Sidewalk
Victory Dr from Mechanics Ave to 3rd St	Sidewalk
Victory Dr from Mechanics Ave to 3rd St	Sidewalk
Victory Dr from 3rd St to 2nd St	Sidewalk
Victory Dr from 3rd St to River Rd	Sidewalk
Victory Dr from 2nd St to River Rd	Sidewalk
Victory Dr from Shuptrine Dr to Driveway	Sidewalk
Victory Dr from Driveway to Whately Ave	Sidewalk
Victory Dr from sidewalk to Whately Ave	Sidewalk
Shell Rd from Placentia Canal to 625 feet east	Sidewalk
Owens St from Whately Ave to Bannon Dr	Sidewalk
Casino Ave from Falligant Ave to Owens St	Sidewalk
Bannon Dr from Owens St to Tuberson Ave	Sidewalk
Bannon Ave from Whately Ave to River Dr	Sidewalk
Rowland Ave from Shuptrine Ave to Whately Ave	Sidewalk
Rowland to Bonaventure	Placentia Canal Phase 1

Projects Identified in Transportation Studies

Street/Intersection	Project Description	Study
SR 21/Augusta Rd Interchange	"Grade Separation at CSX Crossing #632473Y and SR 21/Augusta Road Interchange. Construct a 10-foot-wide shared-use path on the west side of the interchange and a 5-foot-wide sidewalk on the east side of	SR 307 Study Report
Dean Forest Road	SR 307/Bourne Avenue within the project limits to connect to projects GS-02 and PD-03. Install pedestrian lighting adjacent to shared-use path and sidewalks"	SR 307 Study Report
SR 26/US 80/Louisville Road Interchange	"SR 307/Dean Forest Road Grade Separation at Norfolk Southern Crossing #855067. Construct 10-foot-wide shared-use path on west side and 5-foot-wide sidewalk on east side of SR 307/Dean Forest Road and	SR 307 Study Report
Pine Meadow Drive to SR 26/US 80/Louisville Road	connect to projects AC-02 and GS-01. Install pedestrian lighting adjacent to shared-use path and sidewalks"	SR 307 Study Report

Jamaica Run Rd	Install pedestrian lighting adjacent to shared-use path and sidewalks	SR 307 Study Report
Morgan Industrial Boulevard	Raised Median and Pedestrian Accommodations from Pine Meadow Drive to SR 26/US 80/Louisville Road	SR 307 Study Report
SR 26/US 80/Louisville Road to Robert B. Miller Road	Jamaica Run Road Signalization. Install all necessary pedestrian signals, crosswalks, and ramps in accordance with GDOT Policy	SR 307 Study Report
SR 25/US 17/ Ogeechee Road to Landfill Road	Morgan Industrial Boulevard Signalization. Install all necessary pedestrian signals, crosswalks, and ramps in accordance with GDOT Policy	SR 307 Study Report
Landfill Road to I-16 Eastbound Ramps	Raised Median and Pedestrian Accommodations from SR 26/US 80/Louisville Road to Robert B. Miller Road	SR 307 Study Report
SR 21/Augusta Road Interchange to SR 25/Coastal Highway	Pedestrian Accommodations from SR 25/US 17/ Ogeechee Road to Landfill Road. Construct 10-foot-wide shared-use path on east side and 5-foot-wide sidewalk on west side of SR 307/Dean Forest Road. Modify driveways along segment to accommodate new pedestrian facilities. Install pedestrian lighting adjacent to shared-use path and sidewalk	SR 307 Study Report
SR 21	Grange Rd to Smith Ave, 12 ft Multi-Use Path (East Side Only) Segment A	SR 21 Final Report
SR 21	Smith Avenue to Minus Avenue. Install 12-ft Multi-Use Path (Both Sides of Road) Segment B	SR 21 Final Report
SR 21	Segment C (Minus Ave to Oak Street) 12 ft multi-use path (west side only) segment C	SR 21 Final Report

Appendix

Appendix A: Updated Project Tables

Appendix B: Public Involvement Materials

Appendix C: MTP-NMTP Consistency Check

Appendix D: NMTP Amendment Coordination

Appendix A: Updated Project Tables

Ferguson/Norwood Corridor

Previous Project Table:

Line #	Bike Rt A	Bike Rt B	Bike Rt C	Seg # A	Seg # B	Seg # C	Bike Route Name	Roadway	From	To	Length (m)
196	85			85.02			Ferguson/Norwood Corridor	Ferguson Ave.	Whitefield Ave	Skidaway Rd	2.36

Updated Project Table:

Line #	Bike Rt A	Bike Rt B	Bike Rt C	Seg # A	Seg # B	Seg # C	Bike Route Name	Roadway	From	To	Length (m)
196	85			85.02			Ferguson/Norwood Corridor	Ferguson Ave.	Shipyard Rd	Skidaway Rd	2.21

LaRoche Corridor

Previous Project Table:

Line #	Bike Rt A	Bike Rt B	Bike Rt C	Seg # A	Seg # B	Seg # C	Bike Route Name	Roadway	From	To	Length (m)
27	11			11.02			LaRoche Corridor	Laroche Ave.	Grimball Pt Rd	Nottingham Dr	1.4

Updated Project Table:

Line #	Bike Rt A	Bike Rt B	Bike Rt C	Seg # A	Seg # B	Seg # C	Bike Route Name	Roadway	From	To	Length (m)
27	11			11.02			LaRoche Corridor	Laroche Ave.	Bluff Dr	Skidaway Rd	3.19

Port Wentworth Anchor Trail Conceptual Plan

New Project Table:

Line #	Bike Rt A	Bike Rt B	Bike Rt C	Seg # A	Seg # B	Seg # C	Bike Route Name	Roadway	From	To	Length (m)
							Armadale/Cantyre/Barnly	Armadale	Cantyre	Barnly	0.4

New Project Table:

Line #	Bike Rt A	Bike Rt B	Bike Rt C	Seg # A	Seg # B	Seg # C	Bike Route Name	Roadway	From	To	Length (m)
							Armadale at Mobley Park to Crossgate	Armadale	Mobley Park	Crossgate	0.3

New Project Table:

Line #	Bike Rt A	Bike Rt B	Bike Rt C	Seg # A	Seg # B	Seg # C	Bike Route Name	Roadway	From	To	Length (m)
							Crossgate/Boat Launch	Crossgate Road	S Coastal Highway	Boat launch	1.9

New Project Table:

Line #	Bike Rt A	Bike Rt B	Bike Rt C	Seg # A	Seg # B	Seg # C	Bike Route Name	Roadway	From	To	Length (m)
							Crossgate / SR- 21 to electrical transmission line to Monteith Road	Crossgate Road/SR 21	Electrical transmission line	Monteith Road	2.7

New Project Table:

Line #	Bike Rt A	Bike Rt B	Bike Rt C	Seg # A	Seg # B	Seg # C	Bike Route Name	Roadway	From	To	Length (m)
							SR-21 to Meinhard	Monteith	Anchor Park	Meinhard	1.4

New Project Table:

Line #	Bike Rt A	Bike Rt B	Bike Rt C	Seg # A	Seg # B	Seg # C	Bike Route Name	Roadway	From	To	Length (m)
							Meinhard/Monteith to SR-30	Meinhard Rd	Monteith	SR 30	1.3

New Project Table:

Line #	Bike Rt A	Bike Rt B	Bike Rt C	Seg # A	Seg # B	Seg # C	Bike Route Name	Roadway	From	To	Length (m)
							Meinhard/Monteith to SR-30 (Through Anchor Park)	Meinhard Rd	Monteith	SR 30	1.3

New Project Table:

Line #	Bike Rt A	Bike Rt B	Bike Rt C	Seg # A	Seg # B	Seg # C	Bike Route Name	Roadway	From	To	Length (m)
							City limits at Benton Boulevard to SR-30	Benton Blvd	City limits	SR 30	0.9

New Project Table:

Line #	Bike Rt A	Bike Rt B	Bike Rt C	Seg # A	Seg # B	Seg # C	Bike Route Name	Roadway	From	To	Length (m)
							Anchor Park to SR-30 through residential north to Saussy		Anchor Park	SR 30	2.3

New Project Table:

Line #	Bike Rt A	Bike Rt B	Bike Rt C	Seg # A	Seg # B	Seg # C	Bike Route Name	Roadway	From	To	Length (m)
							Old Richmond Road at SR-30 to the roundabout at Lakeside Blvd and Mulberry Ave	Old Richmond Road	SR 30	Roundabout at Lakeside Blvd and Mulberry Ave	1.6

New Project Table:

Line #	Bike Rt A	Bike Rt B	Bike Rt C	Seg # A	Seg # B	Seg # C	Bike Route Name	Roadway	From	To	Length (m)
							Lakeside Drive loop to Mulberry Ave	Lakeside Blvd	Lakeside Blvd	Mulberry Ave	0.5

New Project Table:

Line #	Bike Rt A	Bike Rt B	Bike Rt C	Seg # A	Seg # B	Seg # C	Bike Route Name	Roadway	From	To	Length (m)
							Mulberry to Rice Hope Plantation Rd to SR-21	Mulberry Ave	Rice Hope Plantation Road	SR 21	1.4

Appendix B: Public Involvement Materials

August 2025

PUBLIC NOTICE FOR MTP and NMTP AMENDMENTS

The Coastal Region Metropolitan Planning Organization (CORE MPO) is the transportation planning agency for the Savannah urbanized area. The CORE MPO is intending to process amendments to the 2050 Metropolitan Transportation Plan (MTP) and the Non-motorized Transportation Plan (NMTP). These amendments will ensure that amended projects are eligible for funds for the upcoming Call for Projects application period. CORE MPO is requesting the public to review and provide comments on the draft MTP and NMTP amendments. The amendments will be available for review at the Live Oak public libraries, the Chatham County - Savannah Metropolitan Planning Commission (MPC) office, the MPC website at <https://www.thempc.org/Core>, and other public review agencies. Any changes to the amendments report will be posted on the website.

The comment period starts on **Wednesday, August 13, 2025**, until the close of business on **Wednesday, August 27, 2025**. Comments are accepted via text, email, or mail. Please send your comments to Asia Hernton via:

Text: Send texts to herntona@thempc.org

Email: herntona@thempc.org

Mail: Metropolitan Planning Commission, 110 E. State Street, Savannah, GA 31401

CORE MPO will host one (1) hybrid public meeting to answer questions and accept comments on the proposed MTP and NMTP Amendments in conjunction with the August 2025 CORE MPO Board meeting. The public can attend the meeting in person or virtually via Go-To-Webinar. The meeting time, location and link are listed below.

CORE MPO Board Meeting

Wednesday, August 27, 2025

10:00 a.m.

Metropolitan Planning Commission

110 E. State Street, Savannah GA 31401

The virtual meeting will be conducted with Go-To-Webinar, so advanced registration is required. Please register at <https://register.gotowebinar.com/register/6157430486506551898>. After registration, you will receive a confirmation email containing information about joining the webinar.

For a complete list of public review agencies, additional information regarding the draft TIP amendments, and information regarding the virtual public meeting, please call (912) 651-1456.

Disclaimer: The Chatham County-Savannah Metropolitan Planning Commission (MPC) and Coastal Region Metropolitan Planning Organization (CORE MPO) are committed to the principle of affirmative action and prohibit discrimination against otherwise qualified persons on the basis of race, color, national origin, religion, age, disability, sex, sexual orientation, gender identity and expression, marital status, familial status, parental status, political beliefs, genetic information, income, or other protected category in its recruitment, employment, facility and program accessibility or services.

MPC and CORE MPO are committed to enforcing the provisions of the Civil Rights Act, Title VI, and all the related requirements mentioned above. CORE MPO is also committed to taking positive and realistic affirmative steps to ensure the protection of rights and opportunities for all persons affected by its plans and programs.

Appendix C: MTP-NMTP Consistency Check

The table below is an addendum to document the consistency check between the CORE MPO’s Moving Forward Together 2050 Plan and the amendments to the Non-Motorized Transportation Plan. The projects in this NMTP amendment have local sponsors and are therefore consistent with the 2050 MTP.

This table is sourced from the 2050 MTP, detailing the inclusion of Non-Motorized Set Aside funding in Cost Band One.

GDOT PI #	Map ID	Identified Projects					2025 - 2032				
		NAME	TERMINI		Project Type	Thoroughfare Plan Cross Section	PE	ROW	UTL	CST	Total Project Cost
			FROM	TO							
0017975		Chevis Road Improvements	Wild Heron Rd	State Route 25/Ogeechee Rd	Non-Motorized Improvements	Bike/Ped/Trail		\$ 3,360,546	\$ 1,000,000	\$ 12,000,000	\$ 16,360,546
0017976		Garrard Avenue Improvements	Chatham Pkwy	Gamble Rd	Non-Motorized Improvements	Bike/Ped/Trail		\$ 2,000,000		\$ 8,800,000	\$ 10,800,000
0019015		Green Island Road Multipurpose Path off Diamond Causeway	Diamond Cswy	2.1 miles south	Non-Motorized Improvements	Bike/Ped/Trail				\$ 2,500,000	\$ 2,500,000
TBA		Priority bike/ped projects in the Non-Motorized Transportation Plan with local sponsors			Non-Motorized Improvements	Bike/Ped/Trail				\$ 8,749,433	\$ 8,749,433

Total Cost	\$ 38,409,979
Total Revenue for Non-Motorized Set Aside	\$ 38,409,979
Balance	\$0

Appendix D: NMTP Amendment Coordination


RE: TCC Follow Up - IMPORTANT

From Deana Brooks <DBrooks@chathamcounty.org>

Date Fri 8/8/2025 3:39 PM

To Asia Hernton <herntona@thempc.org>

Cc Kieron Coffield <coffieldk@thempc.org>; Tina Bockhold <TiBockhold@chathamcounty.org>; Damon Rice <darice@chathamcounty.org>

 2 attachments (1 MB)

LaRoche Ave Limits.pdf; Ferguson Ave Limits.pdf;

Hey,

I figured it might be easier if I also responded to this email directly to help track the request for amendments.

Amendments needed for NMTP:

Extend limits of Ferguson Ave to be the full extents of Ferguson, from Shipyard Ave to Skidaway Road. Map attached.

Extend limits of Laroche Ave to be full extents of Laroche, from Bluff Drive to Skidaway Road. Map Attached

Amendments needed for STBG, CRP, TA:

John Carter Road Widening, request to be added. Project was identified in the Freight Plan Update and Coastal Empire Transportation Study

SR 204 at Pine Grove Signal Elimination including improvements at SR 204 at US 17, project identified in SR 204 Study

Let me know if additional information is needed.

Thanks,

Deana


Re: TCC Follow Up - IMPORTANT

From Katie Dunnigan <kdunnigan@portwentworthga.gov>

Date Tue 8/12/2025 9:24 AM

To Asia Hernton <herntona@thempc.org>

Cc Omar Senati-Martinez <osenati@portwentworthga.gov>

 1 attachment (4 MB)

Anchor-Trail-Conceptual-Plan-FINAL.pdf;

Please find attached: the study for a non-motorized trail system n Port Wentworth, for inclusion with proposed CORE MPO plans.

Thank you,



Katie Dunnigan, CZI
Director of Planning and Zoning

7306 GA Highway 21, Suite 301
Port Wentworth, GA 31407

(912) 999-2084 Ext. 707

www.portwentworthga.gov

From: Michele Strickland <MStrickland@Savannahga.Gov>
Sent: Thursday, August 14, 2025 1:42 PM
To: Asia Hernton <herntona@thempc.org>
Cc: Stephen Henry <shenry@savannahga.gov>
Subject: RE: [Caution - External Email] Re: TCC Follow Up - IMPORTANT

Hi Asia,

I've been out of the office; my apologies!!

We do have projects that need to be added to the MTP 2050 and NMTP.

MTP 2050

Benton Boulevard – Highlands Boulevard south to Pooler City Limits – Widen from two lane to four lane divided

Skidaway Road – Gwinnett Street south to Montgomery Cross Road – Widening, sidewalks, turn lanes, intersection improvements

NMTP

Tide to Town

Middleground Road - Multi-use path from SR 204/Abercorn Street (northern intersection) to SR 204/Abercorn Street (southern intersection at Georgia Southern University)

Montgomery Cross Road – Multi-use path and access management improvements – SR 204/Abercorn Street to Sallie Mood Drive

Michele Strickland

Traffic Engineering Manager

City of Savannah

Transportation Services Department

[mstrickland@savannahga.gov](mstrickland@savannahga.gov)